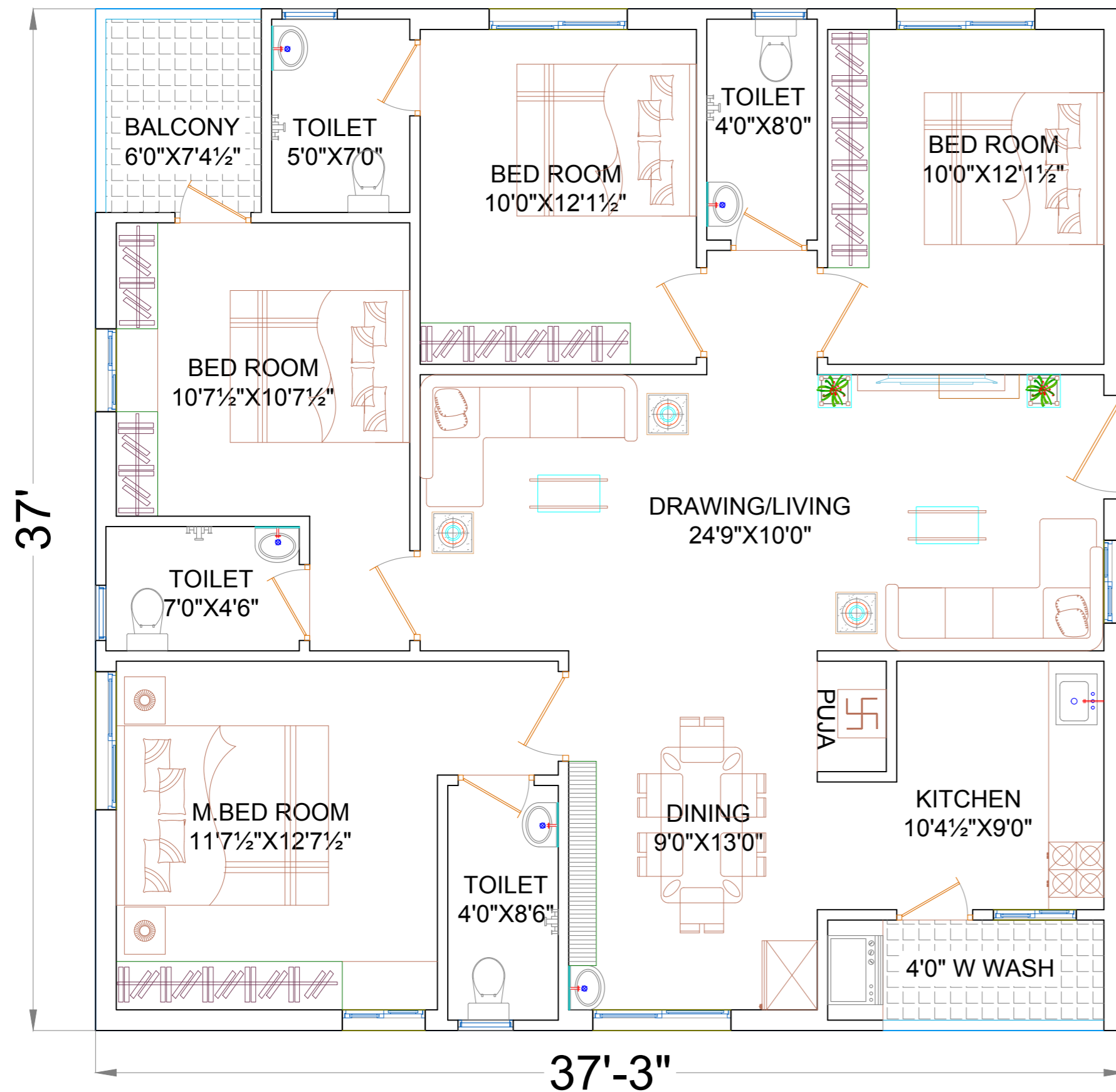
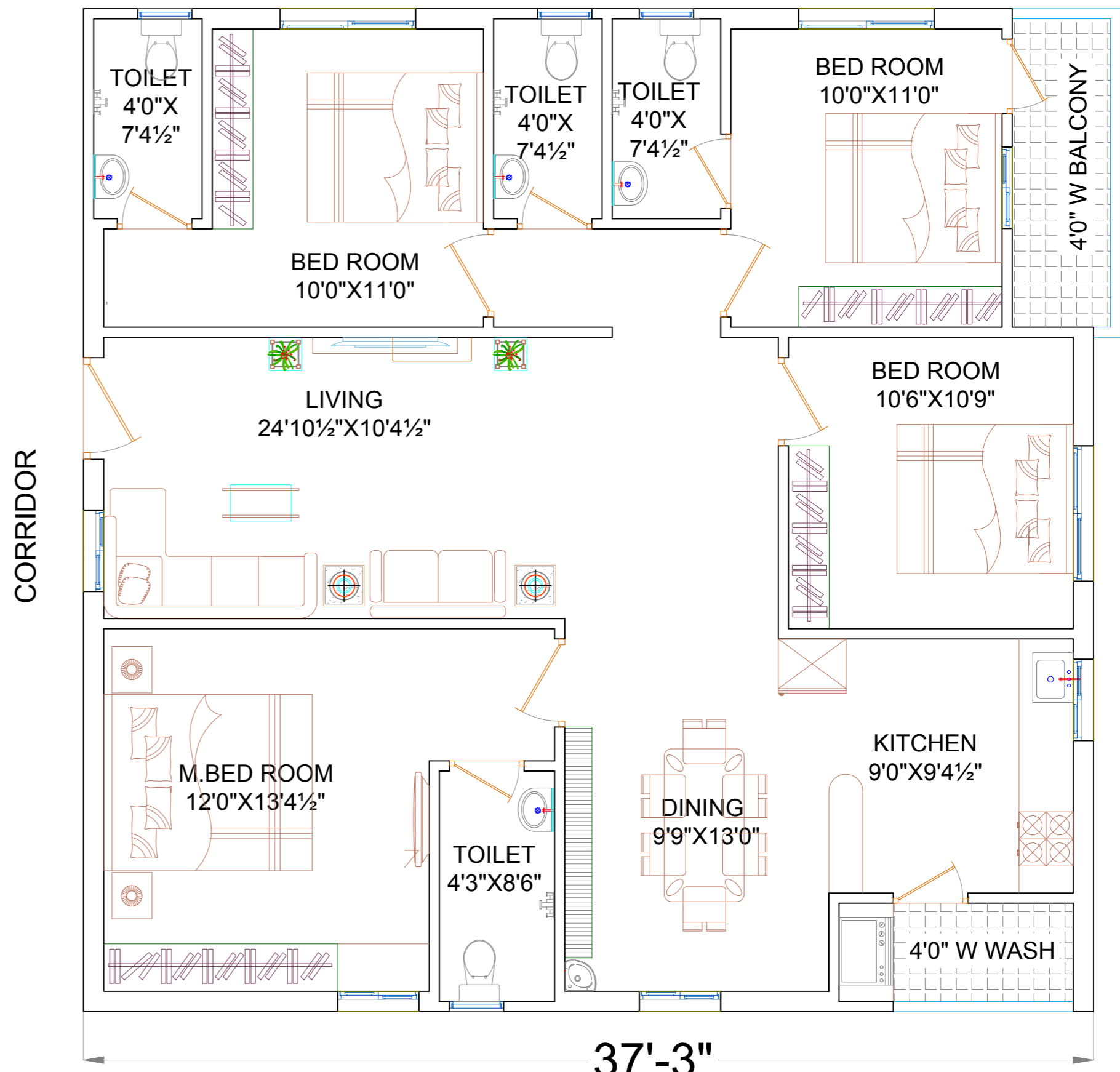


1378.25 SFT

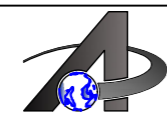



EAST FACING

1378.25 SFT



WEST FACING

CLIENT:	PROJECT CONSULTANTS :	DRAWING TITLE :	PURPOSE :	ARCHITECT	SATYA	APPROVED	M.S.RAO	
M/s. SS DEVELOPERS	 Akshaya Infra Consultants Pvt.Ltd. Architects & Engineers, Corp. Office: 1st.Floor, Bhavana Enclave, VI-Phase, KPHB Colony, Above More Supermarket, Hyderabad-500 072, T.S.INDIA. +91-40-23154848,4949,4999. akshaya@akshayainfra.com www.akshayainfra.com Branch Office: 9-29-19/A, Flat No. 301, Waltair Heights, Balaji Nagar, Near Siripuramjunction, Vishakapatnam-530 003, A.P. 0891-9666404781,4782. akshaya.vsp@akshayainfra.com www.akshayainfra.com Branch Office: #40-3-8, 3rd Floor, Koushalya Gummadi Raja Gopal Rao Street Lobbipet, Vijayawada - 52010 A.P INDIA PH:0866-2491614, 9666404782 akshaya.vja@akshayainfra.com www.akshayainfra.com	PROPOSAL PLAN	FOR APPROVAL	DRAWN		DATE	07.01.2021	
				CHECKED		SCALE	NTS	
PROJECT:	CHIEF CONSULTANT : M.SRINIVASA RAO. M.Tech (Struct)	4-BHK		DRAWING No :			REV.	
SITE AT RAJAHMUNDRY		OPTION:					0	
			AUTHORIZED BY		No.	DATE	DESCRIPTION	BY
		NAME :		REVISIONS.				
		SIGN :	DATE :	This document is property of AKSHAYA INFRA CONSULTANTS Pvt. Ltd. This drawing must not be copied/reproduced/retained/duplicated/disclosed totally or partially in whatsoever manner, without prior written consent from AKSHAYA INFRA CONSULTANTS Pvt.Ltd.				