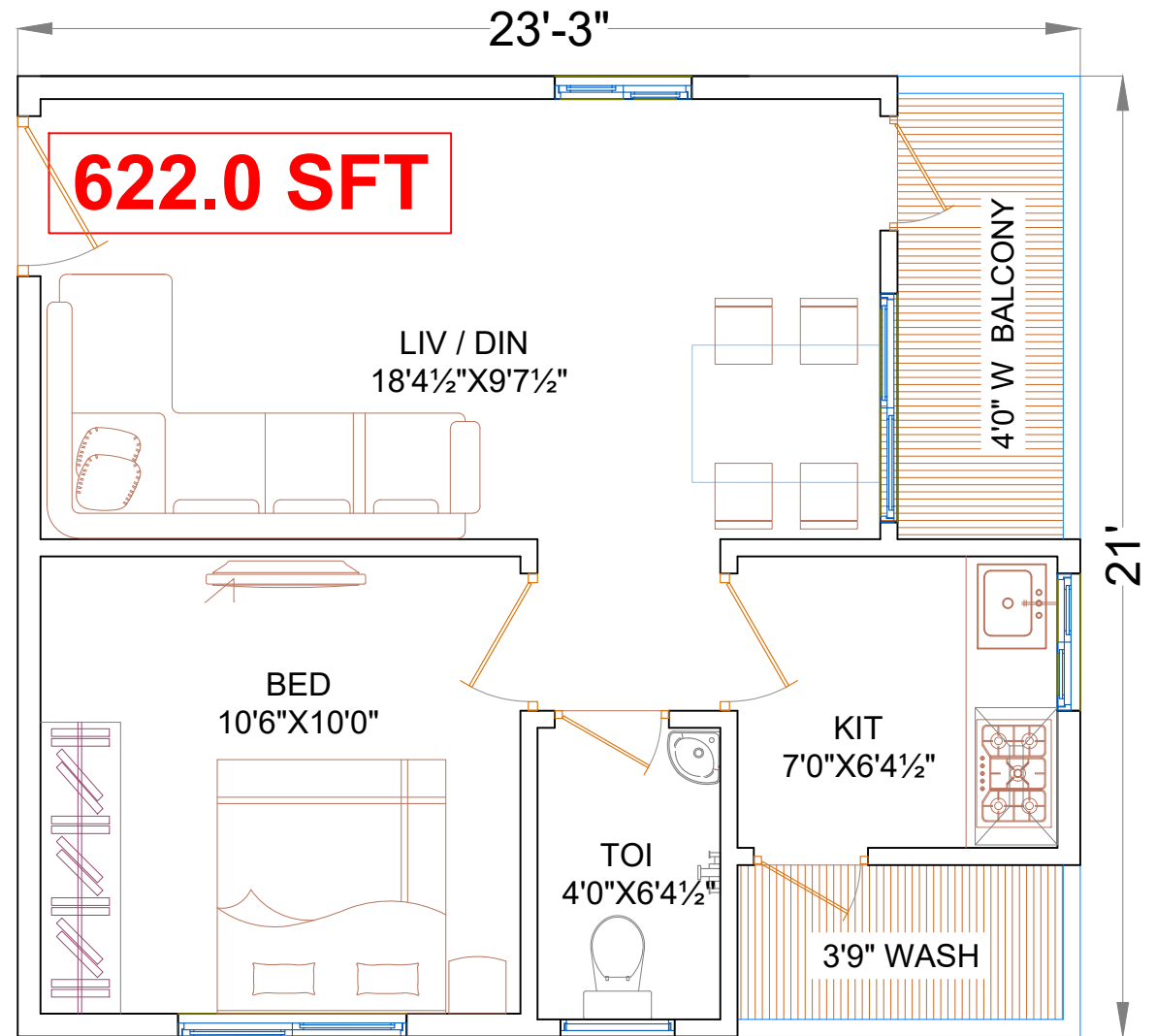



EAST FACING

622.00 SFT



WEST FACING

622.00 SFT

CLIENT:	PROJECT CONSULTANTS :	DRAWING TITLE :	PURPOSE :	ARCHITECT	SATYA	APPROVED	M.S.RAO
M/s. SS DEVELOPERS	 Akshaya Infra Consultants Pvt. Ltd. Architects & Engineers,	PROPOSAL PLAN	FOR APPROVAL	DRAWN		DATE	26.12.2020
				CHECKED		SCALE	NTS
PROJECT:	Corp. Office: 1st.Floor, Bhavana Enclave, VI-Phase, KPHB Colony, Above More Supermarket, Hyderabad-500 072, T.S.INDIA. +91-40-23154848,4949,4999. akshaya@akshayainfra.com www.akshayainfra.com Branch Office: 9-29-19/A, Flat No. 301, Waltair Heights, Balaji Nagar, Near Siripuramjunction, Vishakapatnam-530 003, A.P. 0891-9666404781,4782. akshaya.vsp@akshayainfra.com www.akshayainfra.com Branch Office: #40-3-8, 3rd Floor, Koushalya Gummadi Raja Gopal Rao Street Lobbipet, Vijayawada - 52010 A.P INDIA PH:0866-2491614, 9666404782 akshaya.vja@akshayainfra.com www.akshayainfra.com	1-BHK		DRAWING No :		REV.	0
SITE AT RAJAHMUNDRY	CHIEF CONSULTANT : M.SRINIVASA RAO. M.Tech (Struct)	OPTION:					
		AUTHORIZED BY					
		NAME :	No.	DATE	DESCRIPTION	BY	APPD
		SIGN :		DATE :			
					REVISIONS.		
						This document is property of AKSHAYA INFRA CONSULTANTS Pvt. Ltd. This drawing must not be copied/reproduced/retained/duplicated/disclosed totally or partially in whatsoever manner, without prior written consent from AKSHAYA INFRA CONSULTANTS Pvt.Ltd.	